



POLYLOK™ Inc.

Innovations in Precast, Drainage & Wastewater Products



Zabel®
A Division of Polylok Inc.



**DRAINAGE SOLUTIONS
FOR PROFESSIONALS**



**MAKE IT A
KIT**



POLYLOK™ Inc.



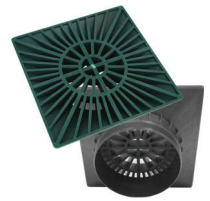
Flow Gates



Round Grates



Atrium Grates



Square Grates



Corrugated Pipe
Adapters/Couplers



4" & 6" Elbows

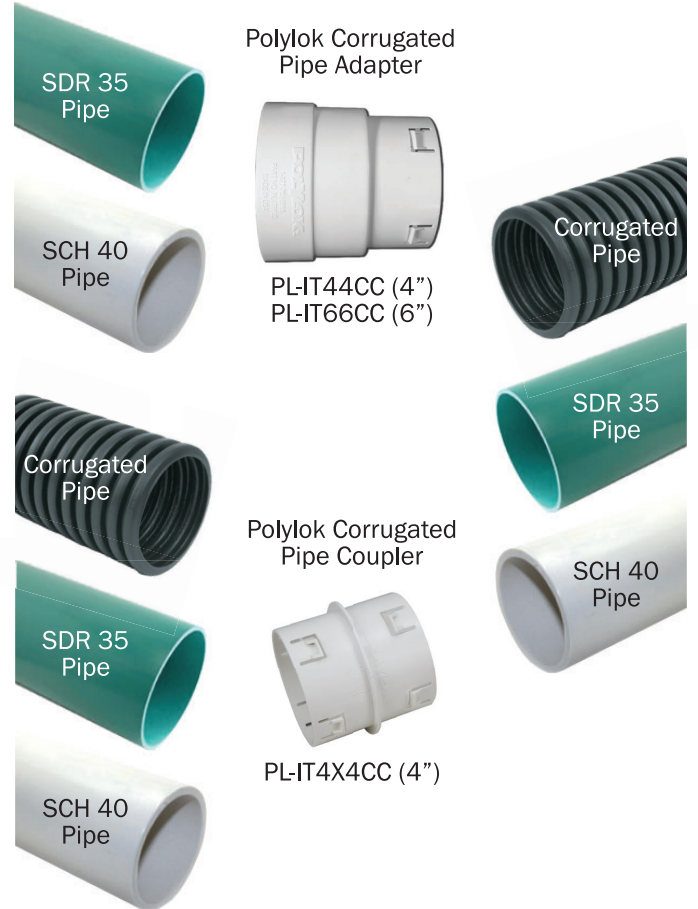


Pro-Grade Adhesive/Sealant

VERSATILITY



ADAPTABILITY



DURABILITY

6" Corrugated,
6" SDR 35, & 6"
SCH 40 Pipe

4" & 6" Flow Gates

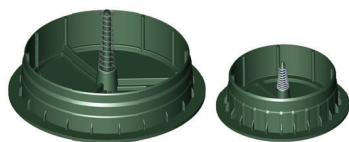


Flow Gates

The Polylok flow gate attaches to 4" and 6" sewer and drain hub. The flow gate pops up when the pressure of the flowing water hits it, allowing the water to discharge. Once the water stops flowing, the flow gate closes again blocking anything from entering.

Flow Gate Features:

- Allows water captured by grates, catch basins, trench drains, and gutter systems to be discharged in areas deemed the most suitable.
- Opens by the hydrostatic pressure of water flowing through the drain pipe, as flow diminishes the emitter closes again.
- Flow Gate opens with minimal pressure.
- Closes during dry weather to help keep debris and rodents from entering the drain pipes.
- Stainless steel spring.
- Fade resistant.
- Available with elbow kit & elbow with corrugated pipe adapter kit.



Stainless steel spring shown on both the 4" and 6" Polylok flow gates.

4" & 6" Corrugated Pipe Adapters



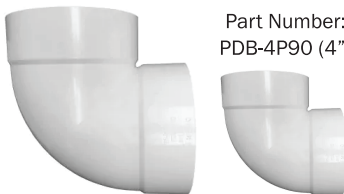
Corrugated Pipe Adapters

These pipe adapters allow you to connect corrugated pipe to SCH 40 or SDR 35 pipe. Do you have a problem where you have SCH 40 or SDR 35 PVC pipe that you need to connect to corrugated pipe? If so, we have the best solution for you!

Corrugated Pipe Adapter Features:

- Easy to install, no tools needed!
- Connects directly to SCH 40, SDR 35, or corrugated pipe.
- The PL-IT44CC adapter fits 4" corrugated pipe as well as 4" SCH 40 and SDR 35 pipe.
- The PL-IT4X4CC coupler fits 4" corrugated pipe as well as 4" SCH 40 and SDR 35 pipe.
- The PL-IT66CC adapter fits 6" corrugated pipe as well as 6" SCH 40 and SDR 35 pipe.

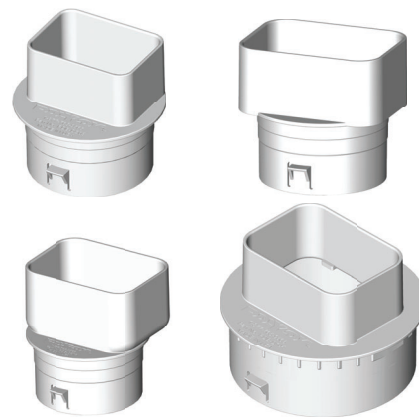
Part Number:
PDB-6P90 (6")



Available 4" & 6" PVC Elbows allow a 90° turn in sewer and drain pipe runs.

Part Number:
PDB-4P90 (4")

4" & 6" Downspout Adapters



Downspout Adapters

Polylok's 4" downspout adapters allow you to transition from a 2"x3" or 3"x4" downspout to 4" SCH 40, 4" SDR 35, or 4" corrugated pipe. Our downspout adapters are also available in 6" to allow 3"x4" downspouts to transition to 6" pipe.

Downspout Adapter Features:

- Transitions water from downspout to drain pipe.
- Connects directly to SCH 40, SDR 35, or corrugated pipe.
- Downspout adapter is made of heavy-duty polypropylene with UV inhibitors to prevent fading and cracking.
- The PDB-DS04 adapter connects 2"x3" downspouts to 4" pipe.
- The PDB-DS06 & PDB-DS13 adapters connect 3"x4" downspouts to 4" pipe.
- The PDB-DS04 adapter connects 3"x4" downspouts to 6" pipe.



PDB-DS03 2"x3" downspout adapter shown on 4" SCH 40, 4" SDR 35, and 4" corrugated pipe.

PART NUMBERS

- 4" Flow Gate: **PDB-4PE-GN**
- 4" Flow Gate & Elbow Kit: **PDB-4PE-KIT**
- 4" Flow Gate, Elbow & Corrugated Pipe Adapter Kit: **PDB-4PE-KIT-IT44CC**
- 4" Flow Gate, Elbow & Corrugated Pipe Coupler Kit: **PDB-4PE-KIT-IT4X4CC**
- 6" Flow Gate: **PDB-6PE**
- 6" Flow Gate & Elbow Kit: **PDB-6PE-KIT**
- 6" Flow Gate, Elbow & Corrugated Pipe Adapter Kit: **PDB-6PE-KIT-IT66CC**

- 4" Corrugated Pipe Adapter: **PL-IT44CC**
- 4" Corrugated Pipe Coupler: **PL-IT4X4CC**
- 6" Corrugated Pipe Adapter: **PL-IT66CC**
- 2"x3" Offset Downspout Adapter for 4" Pipe: **PDB-DS03**
- 3"x4" Downspout Adapter for 6" Pipe: **PDB-DS04**
- 3"x4" Downspout Adapter for 4" Pipe: **PDB-DS06**
- 3"x4" Offset Downspout Adapter for 4" Pipe: **PDB-DS13**

12" Round Catch Basins 4 Hole



20" Round Catch Basins 6, 7, and 8 Hole



24" Rhino Catch Basins 10 Hole



ROUND CATCH BASINS

Polylok round catch basins are available in 12", 20", & 24" diameters and are an essential component in any landscape drainage system. Use our catch basins near areas of standing water to help facilitate proper water drainage and avoid property damage. The Polylok round catch basin system allows the use of our risers to bring the grate or cover to grade as needed. Our boxes allow you to choose what height you want your inlets and outlets to be and accept 2", 3", 4", and 6" pipe with some models.

12" Round Catch Basin Features:

- Use as a rain drain for gutters, driveways, and sub-surface drainage.
- Use with 12" Polylok risers to bring the grate or cover to grade as needed.
- Use our watertight seals with nuts for 2", 3", and 4" SCH 40 or SDR 35 pipe, and 4" corrugated pipe.
- Four stabilizing feet with every box.
- Plastic or galvanized steel grates available to suit your application.
- Solid or heavy-duty covers available for specific design requirements.

Kit Includes:

- Box (4 hole)
- Plastic grate
- Two 4" seals with nuts
- Four stabilizing feet
- Four stainless steel screws



Galvanized steel grates available for the 12" & 20" catch basins.

20" Round Catch Basin Features:

- Can be used as a valve or meter box.
- Use with 20" Polylok risers to bring the grate or cover to grade as needed.
- Use our watertight seals with nuts for 2", 3", and 4" SCH 40 or SDR 35 pipe, and 4" corrugated pipe.
- 6 hole and 7 hole boxes accept 6" pipe.
- Plastic or galvanized steel grates available to suit your application.
- Solid or heavy-duty covers available for specific design requirements.

Kit Includes:

- Box (6 hole, 7 hole, or 8 hole)
- Plastic grate
- Four 4" seals with nuts
- Six stainless steel screws



Optional risers shown on the 12", 20" & 24" catch basins.

24" Rhino Catch Basin Features:

- Can be used as a valve or meter box.
- Use with 24" Polylok risers to bring the grate or cover to grade as needed.
- Use our watertight 4" seals with nuts for 2", 3", and 4" SCH 40 or SDR 35 pipe, and 4" corrugated pipe.
- Use our watertight 6" seals with nuts for 6" SCH 40 or SDR 35 pipe, and 6" corrugated pipe.
- Solid or heavy-duty covers available for specific design requirements.

Kit Includes:

- Box (10 hole)
- Plastic heavy-duty grate
- Four 4" seals with nuts
- Eight stainless steel screws



Available in:

- 5-1/8" for 4" Seals
- 7-1/2" for 6" Seals

Make the perfect size hole for Polylok 4" and 6" seals when using our Rhino Horn hole saws.

PART NUMBERS	12" Round CB Kit: 3017-12	20"x2" Riser: 3009-GR2-NG	7-1/2" Rhino Horn Hole Saw: PL-HS-750
	• 12"x3" Riser: 3017-R3	• 20"x6" Riser: 3009-NG	• 24"x2" Riser: 3008-GR2-NG
	• 12"x6" Riser: 3017-R	• 20"x12" Riser: 3009-R12-NG	• 24"x6" Riser: 3008-NG
	• 12" Galvanized Steel Grate: 3017-ME	• 20" Galvanized Steel Grate: 3017-ME20	• 24"x12" Riser (Flats): 3008-R12-NG
	• 12" Flat Grate: 3017-GE	• 20" HD Flat Grate: 3017-G20	• 24"x12" Riser (Round): 3008-R12R-NG
	• 12" Flat Cover: 3017-C	• 20" HD Flat Cover: 3017-C20	• 24" HD Flat Grate: 3008-G24
	• 20" Round CB Kit (6 Hole): 3017-20CG6	• 20" Dome Cover: 3009-RC	• 24" HD Flat Cover: 3008-WEST
	• 20" Round CB Kit (7 Hole): 3017-207G	• 24" Rhino CB Kit: 3017-G24	• 24" HD Cover: 3008-HD
	• 20" Round CB Kit (8 Hole): 3017-20CG	• 5-1/8" Rhino Horn Hole Saw: PL-HS-513	• 24" Dome Cover: 3008-RC

24" Round Catch Basins



ROUND CATCH BASINS

24" Round Catch Basin Features:

- Made of high density, non-corrosive polyethylene plastic (HDPE) with the highest UV protection available.
- Comes standard with a 24" heavy-duty grate.
- Includes four 4" SCH 40 grommets.
- Grommets can be placed anywhere on the basin or riser stack.
- Custom heights available.
- Accepts all 24" Polylok risers.

Kit Includes:

- 24" basin (approx: 25 gallon capacity)
- Plastic heavy-duty grate
- Four 4" SCH 40 grommets
- Eight stainless steel screws



Basin shown stacked with 24"x12" risers.

9"x9" Square Catch Basins



SQUARE CATCH BASINS

Polylok square catch basins are used to collect and discharge excess water in order to prevent potential damage to landscapes and property. We offer our square catch basins in two sizes: 9"x9" and 12"x12", with many grate options and accessories available. Our square catch basins are pre-cut with two inlet/outlet side openings. Additionally, our catch basins come with two sets of seals that accept 2", 3", and 4" SCH 40 or SDR 35 pipe, and 4" corrugated pipe. With the use of our optional 6" Polylok seal with nut, the 12"x12" model will accept 6" pipe.

Kit Includes:

- Box
- Grate (black or green)
- Two 4" seals with nuts
- Four stainless steel screws



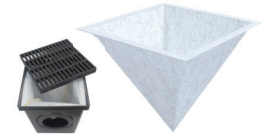
6" & 4" Polylok seal with nut.



9"x9" catch basin shown with optional cast iron grate.

Optional Accessories:

- Cast iron grates
- Atrium grates
- 6" seals with nuts for 12"x12" catch basin
- 6" tall riser for the 12"x12" catch basin
- Solid cover for 12"x12" catch basin
- Silt filter for 12"x12" catch basin



Optional silt filter shown for 12"x12" catch basins.



12"x12" catch basin shown with optional solid cover.



12"x12" catch basin shown with optional plastic atrium grate.



Optional 6" tall risers shown for 12"x12" catch basins.

PART NUMBERS

- 24" Round Catch Basin Kit: **3008-CB**
- 9"x9" Square CB Kit (Black Grate): **PDB-9KIT**
- 9"x9" Square CB Kit (Green Grate): **PDB-9KITG**
- 9"x9" Grate (Black): **PDB-9G-BK**
- 9"x9" Grate (Green): **PDB-9G-GN**
- 9"x9" Atrium Grate (Black): **PDB-9AG-BK**
- 9"x9" Atrium Grate (Green): **PDB-9AG-GN**
- 9"x9" Cast Iron Grate: **PDB-9GM**
- 12"x12" Square CB Kit (Black Grate): **PDB-12KIT**
- 12"x12" Square CB Kit (Green Grate): **PDB-12KITG**
- 12"x12"x6" Riser: **PDB-12R**
- 12"x12" Grate (Black): **PDB-12G-BK**
- 12"x12" Grate (Green): **PDB-12G-GN**
- 12"x12" Atrium Grate (Black): **PDB-12AG-BK**
- 12"x12" Atrium Grate (Green): **PDB-12AG-GN**
- 12"x12" Cast Iron Grate: **PDB-12GM**
- 12"x12" Cover: **PDB-12C**
- 12"x12" Silt Filter: **PDB-12SF**
- 12"x12" Square CB Kit with Silt Filter (Black Grate): **PDB-12KIT-SF**
- 12"x12" Square CB Kit with Silt Filter (Green Grate): **PDB-12KITG-SF**
- 4" Seal w/ Nut: **3001-SN**
- 6" Seal w/ Nut: **3001-SN6**
- Grommets: **1/2" - 6" Sizes Available**

4' Heavy Duty Trench/Channel Drains



HEAVY DUTY TRENCH DRAINS

Our trench/channel drain system is engineered to deliver the most flexibility in a heavy-duty design. The Polylok heavy-duty trench/channel drain is H-20 wheel load rated when cast in reinforced concrete. It offers a modular design with interlocking components to enable quick and easy connections. Each segment is 4' in length and comes with a reversible ADA compliant grate that can either be flat or allow for a 3/16" convex surface.

Our trench/channel drain design isn't just a great design, it's engineered with a smooth installation in mind. Each 4' segment can be joined together or cut down to 12" increments. Each trench/channel drain segment has eight (8) anchor positions to allow rebar to be installed to prevent floating. There are two sections on each 4' trench drain to allow for 2x4's to be installed to aid in leveling and anchoring prior to pouring concrete. There are four drainage ports on each 4' section to enable 3", 4" SCH 40, or 4" SDR 35 connections. Each segment is shipped with #8x1-1/4" stainless steel screws to fasten the grates to the channel and to secure the interlocking pieces, so there is no need to visit the hardware store.

4' Ductile Grate Trench/Channel Drains

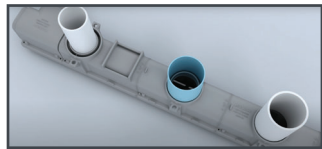


DUCTILE GRATE TRENCH DRAINS

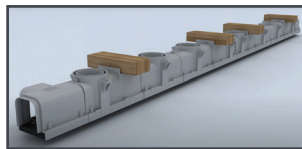
Polylok drains offer homeowners, architects, engineers, contractors and storm water managers a variety of superior surface drains for a myriad of applications. No matter what the situation requires, from residential to unlimited heavy industrial applications, our quality is unmatched. Polylok drains are engineered for simple, one-step installations, minimizing contractor costs for installation. Polylok drains meet or exceed the Americans with Disabilities Act of 1990; Section 4.5.4.

Ductile Grate Trench Drain Features:

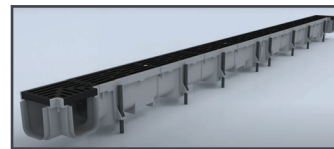
- Comes with stainless steel hardware
- Easily installed and removed with one bolt
- 47 sq. in. of open area
- Rust resistant
- Load Class C
- Application: heavy-duty/commercial
- Application proof load: 310 psi
- Typical application standard: A-A6005



Each channel has four drainage ports that will accept 3" or 4" SCH 40, or 4" SDR 35 pipe.



2x4's can be fastened to provide a wider footing.



Outside holes accept #4 rebar for fast positioning.



Ductile grate mounting hardware



Trench/Channel Tee



Trench/Channel 90° Corner



End Cap



End Outlet



Leaf Guards



Corrugated Pipe Adapters

PART NUMBERS	• 4' HD Trench/Channel Drain (Black): PL-90860	• Tee (Ductile): PL-90860-T-DIG	• End Cap (Tan): PL-90860-CET
	• 4' HD Trench/Channel Drain (Grey): PL-90860-G	• 90° Corner (Black): PL-90860-90	• End Outlet (Black): PL-90860-OE
	• 4' HD Trench/Channel Drain (Green): PL-90860-GR	• 90° Corner (Grey): PL-90860-90G	• End Outlet (Grey): PL-90860-OEG
	• 4' HD Trench/Channel Drain (Tan): PL-90860-TN	• 90° Corner (Green): PL-90860-90GR	• End Outlet (Green): PL-90860-OEGR
	• 4' Ductile Trench/Channel Drain: PL-90860-CI	• 90° Corner (Tan): PL-90860-90T	• End Outlet (Tan): PL-90860-OET
	• Tee (Black): PL-90860-T	• 90° Corner (Ductile): PL-90860-90-DIG	• 3" Leaf Guard(Black): PAG-3T
	• Tee (Grey): PL-90860-TG	• End Cap (Black): PL-90860-CE	• 4" Leaf Guard (Black): PAG-4T
	• Tee (Green): PL-90860-TGR	• End Cap (Grey): PL-90860-CEG	• 3" Corrugated Pipe Adapter: PL-90860-V43
	• Tee (Tan): PL-90860-TAN	• End Cap (Green): PL-90860-CEGR	• 4" Corrugated Pipe Adapter: PL-90860-V44

4' Skinny Trench/Channel Drains



SKINNY TRENCH DRAINS

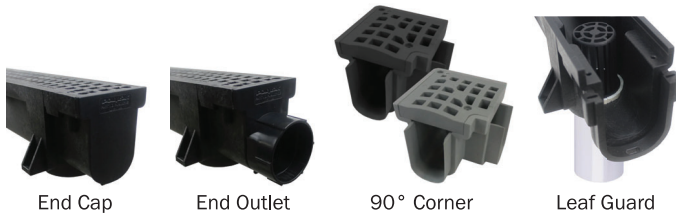
The Polylok 4ft. skinny trench/channel drain system offers many of the same features that our 4ft. heavy duty trench/channel drain system does but in a slim, compact design!

Skinny Trench Drain Features:

- Trench drain & grate come in 48" (4 feet) sections that can be cut down to 12", 24", & 36".
- All outlet ports accept 2" SCHD 40 pipe.
- Outside holes accept #4 rebar for fast positioning.
- Optional open end outlets and closed end caps available.
- Grates are reversible from a flat side to a 1/8" convex side.

Available Options:

- 90° corner
- End cap
- End outlet
- 2" leaf guard

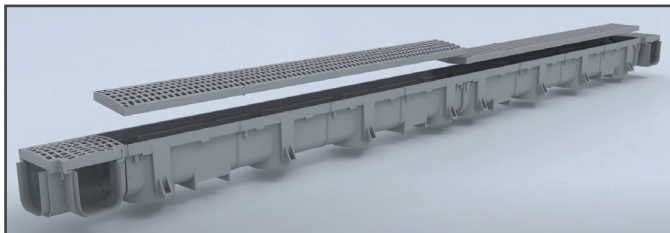


End Cap

End Outlet

90° Corner

Leaf Guard



Reversible ADA compliant grates that can either be flat or allow for a convex surface. (3/16" convex on HD Trench and 1/8" convex on Skinny Trench)

24" Drain Wells



DRAIN WELLS

The Polylok drain well is an easy to install dry well used to collect, retain, and discharge storm water. Our drain well allows the flexibility to choose your inlet and leaching locations. The drain well cover allows for a 4" surface drain and is equipped with two recessed handles for easy removal. One of our drain well's greatest features is its ability to allow stacking of Polylok 24" risers to accommodate higher volumes of water.

Drain Well Features:

- Inlet and leaching location flexibility.
- Lid will accept 4" surface drain.
- Lid is equipped with two recessed handles.
- Accepts any Polylok 24" riser.
- Built in anti-flotation ring.
- Open bottom design
- Holds 56 gallons.
- Customizable accessories available.



24" Drain Well shown with an added Polylok 24"x12" riser.



24" Drain Well shown with a Polylok 24" HD flat grate

PART NUMBERS

- 4' Skinny Trench Drain (Black): **PL-90861**
- 4' Skinny Trench Drain (Grey): **PL-90861-G**
- 90° Corner (Black): **PL-90861-90**
- 90° Corner (Grey): **PL-90861-90G**
- End Cap (Black): **PL-90861-CE**
- End Cap (Grey): **PL-90861-CEG**
- End Outlet (Black): **PL-90861-OE**
- End Outlet (Grey): **PL-90861-OEG**
- 2" Leaf Guard (Black): **PAG-2T**

- 24" Drain Well Kit: **3008-DWK**
- 24"x2" Riser: **3008-GR2-NG**
- 24"x6" Riser: **3008-NG**
- 24"x12" Riser (Wall Flats): **3008-R12-NG**
- 24"x12" Riser (Round Wall): **3008-R12R-NG**
- 24" HD Flat Grate: **3008-G24**
- Grommets: **1/2" - 6" Sizes Available**



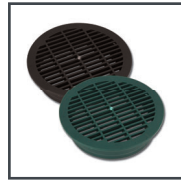
3" Pipe Grate
PDB-3G-BK
PDB-3G-GN



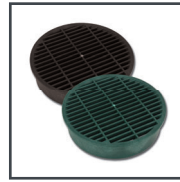
4" Pipe Grate
PDB-4G-BK
PDB-4G-GN



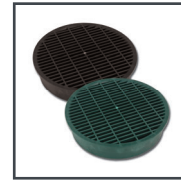
4" Atrium Grate
PAG-4-BK
PAG-4-GN



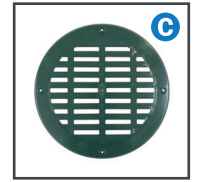
6" Pipe Grate
PDB-6G-BK
PDB-6G-GN



8" Pipe Grate
PDB-8G-BK
PDB-8G-GN



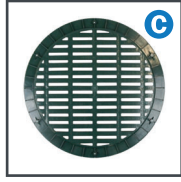
10" Pipe Grate
PDB-10G-BK
PDB-10G-GN



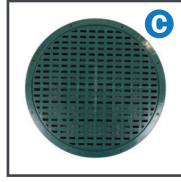
12" Pipe Grate
3004-GR-GN
3004-C



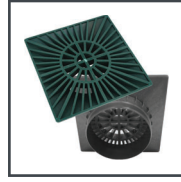
15" Pipe Grate
300415-GR
300415-C



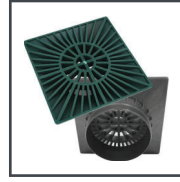
18" Pipe Grate
3007-HDG
3007-HDC



24" Pipe Grate
3008-G24
3008-WEST
3008-HD



6" Square Grate
PDB-6SPG-BK
PDB-6SPG-GN



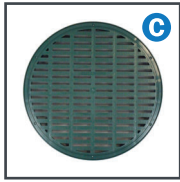
9" Square Grate
PDB-9SPG-BK
PDB-9SPG-GN



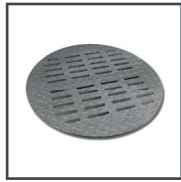
12" Catch Basin Grate
3017-GE
3017-C



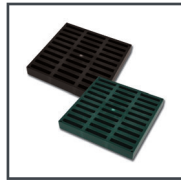
12" Galvanized Steel Grate
3017-ME



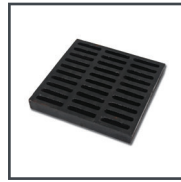
20" Catch Basin Grate
3017-G20
3017-C20



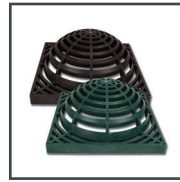
20" Galvanized Steel Grate
3017-ME20



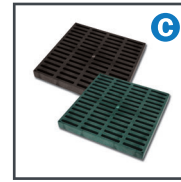
9"x9" Catch Basin Grate
PDB-9G-BK
PDB-9G-GN



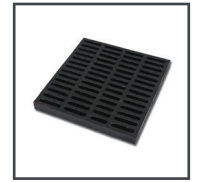
9"x9" Cast Iron Grate
PDB-9GM



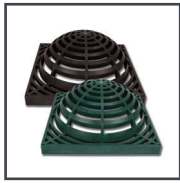
9"x9" Atrium Grate
PDB-9AG-BK
PDB-9AG-GN



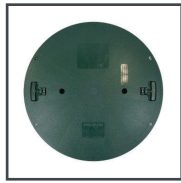
12"x12" Catch Basin Grate
PDB-12G-BK
PDB-12G-GN
PDB-12C



12"x12" Cast Iron Grate
PDB-12GM



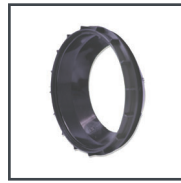
12"x12" Atrium Grate
PDB-12AG-BK
PDB-12AG-GN



20" & 24" Riser Cover
3009-RC (20")
3008-RC (24")



4" Seal & Nut
3001-SN



6" Seal & Nut
3001-SN6



12"x12" Catch Basin Riser
PDB-12R



12"x3" Riser
3017-R3



12"x6" Riser
3017-R



20"x2" Riser
3009-GR2-NG



20"x6" Riser
3009-NG



20"x12" Riser
3009-R12-NG



24"x2" Riser
3008-GR2-NG



24"x6" Riser
3008-NG



24"x12" Riser
3008-R12-NG (Flats)
3008-R12R-NG (Round)



Pro-Grade Adhesive/Sealant
PL-E6100

C Solid cover option available.